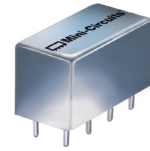


# Plug-In Frequency Mixer

## SRA-3H+

Level 17 (LO Power +17 dBm) 0.05 to 200 MHz



CASE STYLE: A01

### Maximum Ratings

Operating Temperature	-55°C to 100°C
Storage Temperature	-55°C to 100°C
RF Power	200mW
IF Current	40mA

Permanent damage may occur if any of these limits are exceeded.

### Pin Connections

LO	8
RF	1
IF	3,4 <sup>^</sup>
GROUND	2,5,6,7
CASE GROUND	2

<sup>^</sup> pins must be connected together externally

### Features

- excellent conversion loss, 5.18 dB typ.
- high L-R isolation, 40 dB typ. L-I isolation, 40 dB typ.
- rugged welded construction
- hermetic

### Applications

- VHF/UHF
- FM broadcast radio
- maritime communications
- defense & federal communications

**+RoHS Compliant**  
The +Suffix identifies RoHS Compliance. See our web site for RoHS Compliance methodologies and qualifications

### Electrical Specifications

FREQUENCY (MHz)		CONVERSION LOSS (dB)				LO-RF ISOLATION (dB)						LO-IF ISOLATION (dB)					
LO/RF $f_L$ - $f_U$	IF	Mid-Band m		Total Range Max.	Total Range Max.	L		M		U		L		M		U	
		$\bar{X}$	$\sigma$			Max.	Min.	Typ.	Min.	Typ.	Min.	Typ.	Min.	Typ.	Min.	Typ.	Min.
0.05-200	DC-200	5.18	.05	7.0	7.5	50	45	40	30	35	25	45	35	40	30	30	20

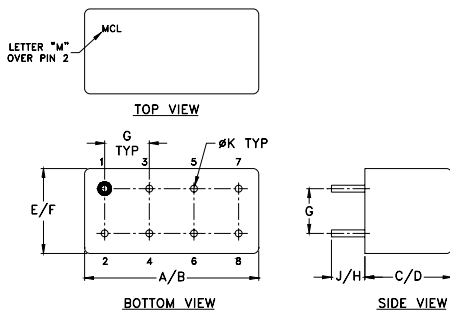
1 dB COMP.: +10 dBm typ.

L = low range [ $f_L$  to  $10 f_L$ ]  
m = mid band [ $2 f_L$  to  $f_U/2$ ]

M = mid range [ $10 f_L$  to  $f_U/2$ ]

U = upper range [ $f_U/2$  to  $f_U$ ]

### Outline Drawing



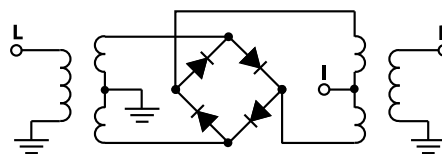
### Outline Dimensions (inch/mm)

A	B	C	D	E	F					
.770	.800	.385	.400	.370	.400					
19.56	20.32	9.78	10.16	9.40	10.16					
G	H	J	K			wt				
.200	.20	.14	.031			grams				
5.08	5.08	3.56	0.79			5.2				

### Typical Performance Data

Frequency (MHz)		Conversion Loss (dB)	Isolation L-R (dB)	Isolation L-I (dB)	VSWR RF Port (:1)	VSWR LO Port (:1)
RF	LO	LO +17dBm	LO +17dBm	LO +17dBm	LO +17dBm	LO +17dBm
0.05	30.05	5.79	61.52	58.47	1.22	2.35
0.20	30.20	5.33	61.30	55.83	1.23	2.27
1.00	31.00	5.25	61.00	55.41	1.22	2.14
5.00	35.00	5.18	58.85	54.15	1.21	2.17
10.00	40.00	5.36	54.85	51.92	1.20	2.19
20.00	50.00	5.40	48.89	47.33	1.20	2.19
41.42	71.42	5.37	41.07	40.89	1.19	2.18
50.00	80.00	5.37	39.79	39.78	1.18	2.27
69.00	99.00	5.34	39.34	38.19	1.15	2.20
89.68	59.68	5.33	38.45	35.45	1.15	2.21
103.47	73.37	5.34	36.25	36.39	1.13	2.14
110.37	80.37	5.37	35.73	35.84	1.13	2.07
117.26	87.26	5.38	35.17	35.59	1.11	2.12
131.05	101.05	5.40	34.48	35.04	1.10	2.15
137.95	107.95	5.42	33.95	34.10	1.10	2.24
151.74	121.74	5.50	32.91	31.97	1.11	2.21
165.53	135.53	5.66	31.97	30.09	1.12	2.17
179.31	149.31	5.76	31.41	28.67	1.14	2.13
193.10	163.10	5.77	31.62	28.17	1.17	2.20
200.00	170.00	5.75	32.02	28.21	1.19	2.23

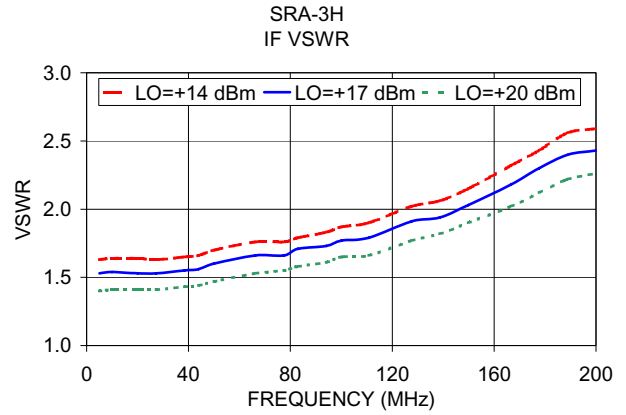
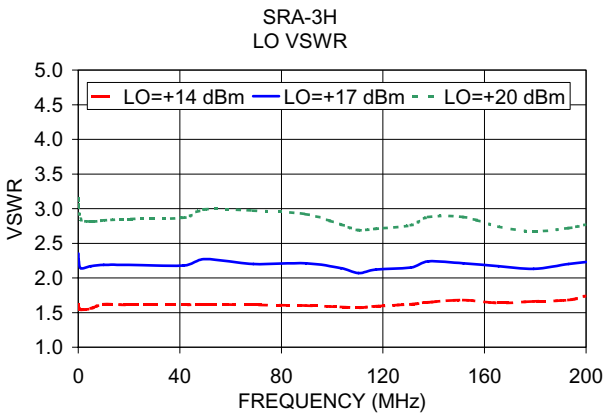
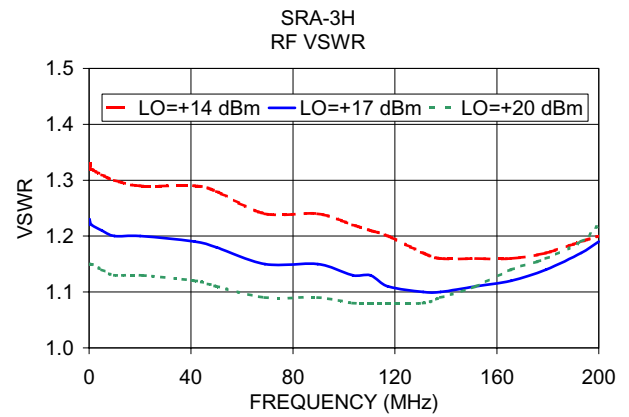
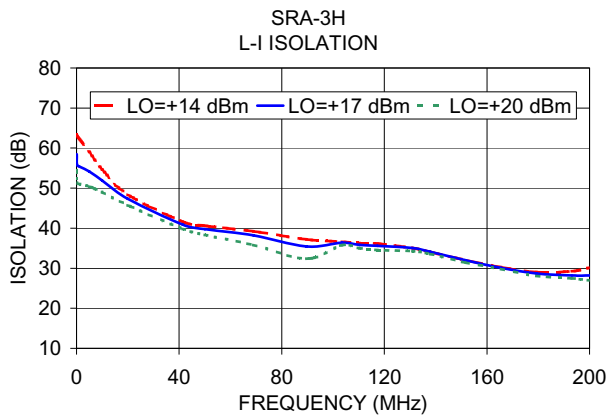
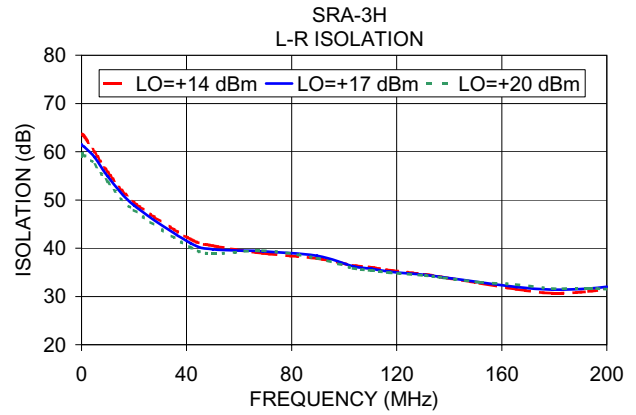
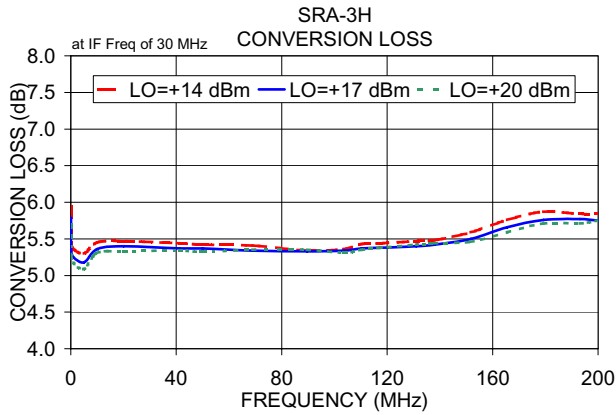
### Electrical Schematic



### Notes

- Performance and quality attributes and conditions not expressly stated in this specification document are intended to be excluded and do not form a part of this specification document.
- Electrical specifications and performance data contained in this specification document are based on Mini-Circuit's applicable established test performance criteria and measurement instructions.
- The parts covered by this specification document are subject to Mini-Circuit's standard limited warranty and terms and conditions (collectively, "Standard Terms"); Purchasers of this part are entitled to the rights and benefits contained therein. For a full statement of the Standard Terms and the exclusive rights and remedies thereunder, please visit Mini-Circuit's website at [www.minicircuits.com/WCLStore/terms.jsp](http://www.minicircuits.com/WCLStore/terms.jsp)





**Notes**

- A. Performance and quality attributes and conditions not expressly stated in this specification document are intended to be excluded and do not form a part of this specification document.
- B. Electrical specifications and performance data contained in this specification document are based on Mini-Circuit's applicable established test performance criteria and measurement instructions.
- C. The parts covered by this specification document are subject to Mini-Circuits standard limited warranty and terms and conditions (collectively, "Standard Terms"); Purchasers of this part are entitled to the rights and benefits contained therein. For a full statement of the Standard Terms and the exclusive rights and remedies thereunder, please visit Mini-Circuits' website at [www.minicircuits.com/MCLStore/terms.jsp](http://www.minicircuits.com/MCLStore/terms.jsp)

